

Total number of printed pages-8

3 (Sem-6/CBCS) CHE HC 2

2023

CHEMISTRY

(Honours Core)

Paper : CHE-HC-6026

(Organic Chemistry-V)

Full Marks : 60

Time : Three hours

The figures in the margin indicate full marks for the questions.

1. Answer the following questions : $1 \times 7 = 7$

(a) What do you mean by fingerprint region ?

(b) Which of the following is a chromophore ?

(i) $-\text{SO}_3\text{H}$

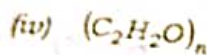
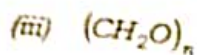
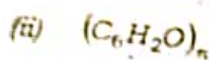
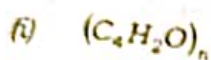
(ii) $-\text{OH}$

(iii) $-\text{COOH}$

(iv) $-\text{NO}_2$

Contd.

(c) The general formula of carbohydrate is—



(d) Which of the following compounds do not absorb light above $200m\mu$?

(i) Ethanol

(ii) Diethyl ether

(iii) 2-Butanone

(iv) Benzene

(e) At what wavelength range the coloured compounds absorb?

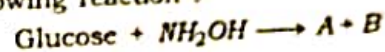
(f) Give one example of a thermosetting plastic.

(g) What are the expected products of hydrolysis of Lactose?

2. Give answer of the following : 2×4=8

(a) What are the different types of electronic transitions that occur in an organic molecule?

(b) Find out the products A and B in the following reaction :



(c) What is a mordant dye? Give one example. 1+1=2

(d) Give one example of each of the following polymers : 1+1=2

(i) Polyamides

(ii) Polyesters

3. Answer any three of the following : 5×3=15

(a) (i) How can you distinguish between intra and inter-molecular hydrogen bonding with the help of IR spectroscopy? 3

(ii) How can you distinguish the following pair of compounds using IR spectroscopy Propanone and Propanal? 2

(b) Fructose contains a keto group, but still it gives silver mirror test on treatment with Tollen's reagent. Explain by showing the rearrangement reactions involved. What is the name of the rearrangement reaction? $2+2+1=5$

(c) Match the following in 'A' with those given in 'B': $1 \times 5 = 5$

'A'

- (i) D-Sorbitol
- (ii) L-Ascorbic acid
- (iii) Glycoside
- (iv) C-L of glucose
- (v) Maltose

'B'

- (a) Anomeric carbon
- (b) A disaccharide
- (c) A sugar lactone
- (d) Sugar alcohol
- (e) A reducing sugar

(d) Write the synthesis of Congo red dye. Show the structural changes involved due to which it changes color from red to blue in acid solution. $2+3=5$

(e) (i) Write the full form of the following terms: 2

- (i) PAN
- (ii) PTFE
- (iii) PCTFE
- (iv) BSR

(ii) What are polyolefins and polydienes? Give one example of each. $1+2=3$

4. Answer any three of the following: $10 \times 3 = 30$

(a) (i) Draw the Fisher's Projection formula of D-glucose.

(ii) What do you mean by the term anomerization? Show the mechanism of anomerization of D-glucose.

(iii) Draw the chair conformers of both the α -D(+) and β -D(+) glucopyranose.

(iv) How do you explain the greater stability of β -D(+)-glucopyranose from their conformers? $1+3+3+3=10$

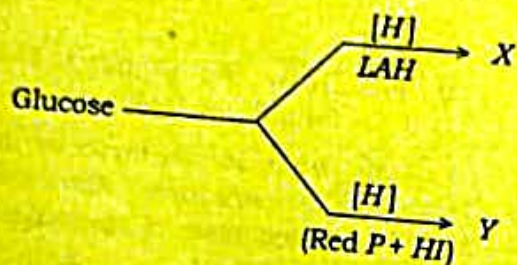
(b) (i) How will you bring the following conversions? $3 \times 2 = 6$

(A) An aldopentose to an aldohexose

(B) D-fructose to D-glucose

(ii) How many stereoisomers are possible for both aldohexoses and 2-ketohexose? 2

(iii) Find X and Y in the following reactions: 2



(c) (i) Give the classification of dyes on the basis of their functional group or chemical constitution. 5

(ii) What are acid and basic dyes? Give one example of each dye. Name the fabric to which they can be applied. 5

(d) (i) What are the two monomers of Dacron? 2

(ii) Give two differences between linear polymers and branched chain polymers. 2

(iii) Write a note on biodegradable polymers. 2

(iv) Fill in the blanks: 1×4=4

(A) Polymers which have $(-\text{COO}-)$ linkages are known as _____.

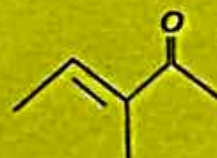
(B) Polyethene is obtained by the polymerisation of _____.

(C) Polystyrene is obtained by the polymerisation of styrene in presence of _____ as initiator.

(D) Proteins are the examples of _____ polymers.

(e) (i) How many electronic transitions are expected for benzene? 1

(ii) Use Woodward-Fieser rule to determine the λ_{max} of the following compounds: 2+2=4



- (iii) Predict the chemical shift positions for the protons in 1-bromoethane and hence draw a rough sketch of the ^1H NMR spectrum. 3
- (iv) In a ^1H NMR spectrum, the protons of ethene appear at a more downfield region than expected. Why? 2
- (f) (i) Explain the basic principle of NMR spectroscopy. 5
- (ii) Explain, why ESR spectrum is recorded in derivative mode? 2
- (iii) Predict and draw the hyperfine structure of CH_3 using ESR spectroscopy. 3
-